



CHARACTERISTICS & FUNCTIONALITIES

EXCIPRESS™

SD 2

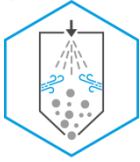


DESCRIPTION

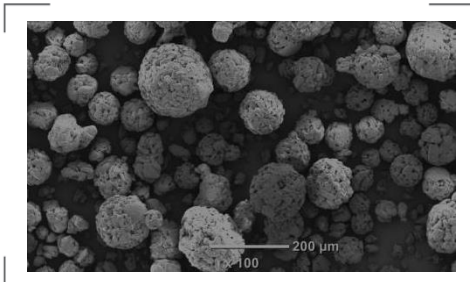
EXCIPRESS™ SD2 is a Spray-Dried lactose typically used for Direct Compression. It is manufactured under GMP standards and conforms to Ph.Eur, USP-NF and JP lactose monohydrate monographs.

Spray-dried lactose consists of fine primary lactose particles bound in a matrix of amorphous lactose.

- It combines :
- high compaction properties of fine lactose crystals and amorphous lactose
 - very good flowability of spherical particles.



SEM (Scanning Electron Microscopy)



KEY BENEFITS

- Excellent compressibility
- Very good flowability
- Very good blending props (Low dose formulations)

APPLICATIONS

- Direct compression
 - Tablets
 - Effervescent tablets
 - Sweetener tablets
- Hard capsules, sachets

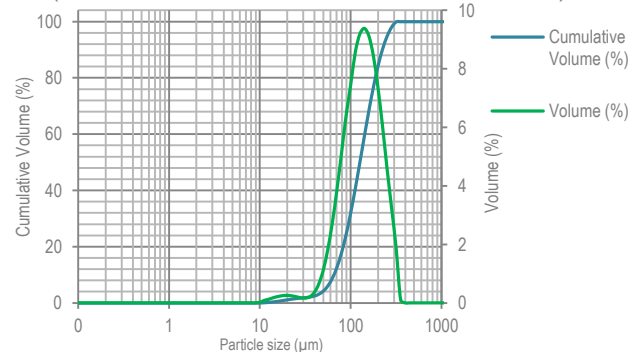


PARTICLE SIZE DISTRIBUTION (PSD)

PSD (Air jet sieve)	Specifications (%)
% < 45 µm	≤ 15
% < 100 µm	30 - 60
% < 250 µm	≥ 98

Spray-dried process gives spherical particles with a narrow Particle Size Distribution that flow very well.

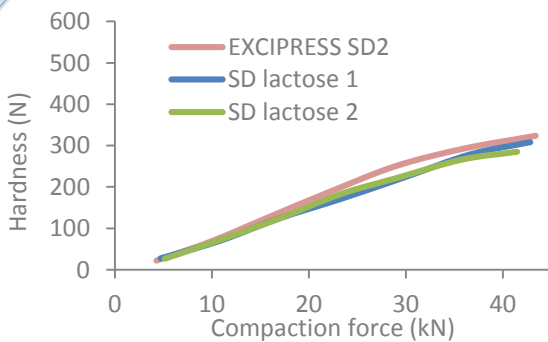
PSD (Malvern Laser diffraction, indicative values)



x_{10} : 65 µm x_{50} : 127 µm x_{90} : 224 µm



COMPRESSIBILITY



Compaction profile versus other SD products on the market (0,5% magnesium stearate)

EXCIPRESS™ SD2 exhibits an excellent compressibility. It is an excipient of choice for Direct Compression formulations.

EXCIPRESS™ SD2 can be considered as an alternative to most available spray-dried lactose products.



FLOWABILITY

According to flowability index measured by Flodex, EXCIPRESS™ SD2 exhibits a “very good” flowability.

- POURED DENSITY: 0.55 g/mL
- TAPPED DENSITY: 0.63 g/mL
- CARR'S INDEX: 13 %
- HAUSNER RATIO: 1.15

How would you like your lactose?

The data contained in this document are for information purposes only and are non-contractual. For more information, contact us: technical.support@armor-pharma.com