

## Recommended Solvent System, Reconstitution Level and Process Conditions

---

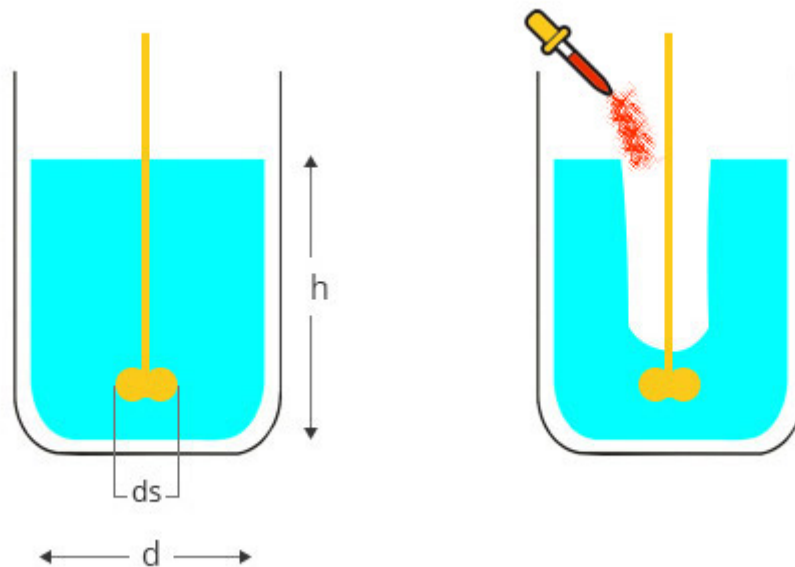
These factors will all depend on the polymer base that has been chosen. Please refer to the process guidance sheet supplied with the original sample from our laboratories or contact us for this information.

## Equipment / Accessories

---

Variable-speed mechanical stirrer

Mixing Vessel



## Reconstitution Process

---

Add the weighed quantity of the chosen solvent to a mixing vessel.

Using a mechanical stirrer, stir the solvent to form a vortex.

---

Add required quantity of Instacoat to the centre of the liquid vortex in a slow steady stream, avoiding clumping, while maintaining a vortex. Once the entire quantity of Instacoat has been added, reduce the stirrer speed to eliminate the vortex. (Fig. 2) Continue mixing for 45 minutes.

NOTE: With some mixed solvent systems the Instacoat is dispersed in one solvent before addition of the other solvent. Please refer to the guidance mentioned above for details.