



# CHARACTERISTICS & FUNCTIONALITIES

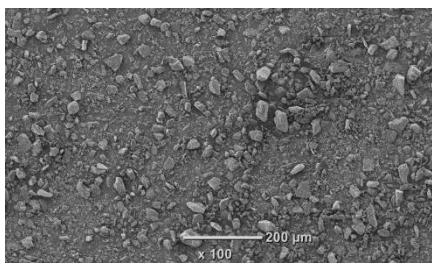
**LACTOSE**  
MONOHYDRATE

**450**  
**MESH**

## DESCRIPTION

**ARMOR PHARMA™ lactose monohydrate 450M** is a very finely milled powder of  $\alpha$ -lactose monohydrate. This lactose is produced in ARMOR PHARMA™ dedicated & state-of-the-art facility in Loudéac (France). Manufactured under EXCIPACT™ GMP standards, it conforms to Ph.Eur, USP-NF and JP lactose monohydrate monographs.

SEM (Scanning Electron Microscopy)



### KEY BENEFITS

- Compressibility
- Blending properties
- Storage stability

### APPLICATIONS

- Wet granulation
- Dry granulation
- Blends/Premixes/Triturations
- Fermentation processes

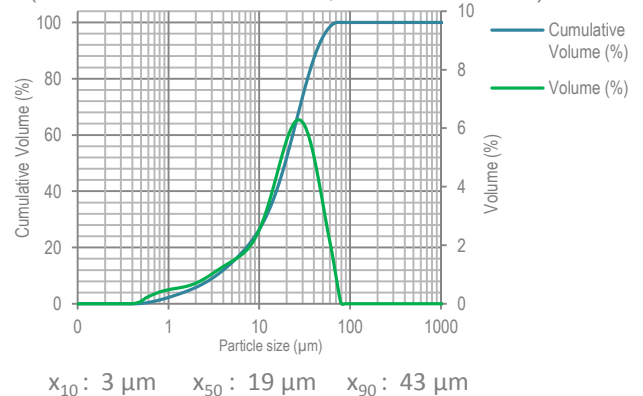


## PARTICLE SIZE DISTRIBUTION (PSD)

PSD (Air jet sieve)	Specifications (%)
% < 45 $\mu\text{m}$	$\geq 90$
% < 63 $\mu\text{m}$	$\geq 98$
% < 150 $\mu\text{m}$	100

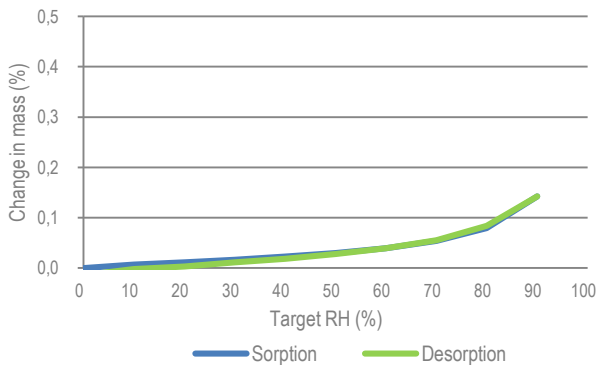
Due to the presence of very finely milled particles, this  $\alpha$ -lactose monohydrate combines good compaction and blending properties.

PSD (Malvern Laser diffraction, indicative values)



## MOISTURE SORPTION

DVS (Dynamic Vapor Sorption)



The hygroscopicity of  $\alpha$ -lactose monohydrate is very low which enables high stability both in storage as well as in formulations

## FLOWABILITY

- POURED DENSITY: 0.46 g/mL
- TAPPED DENSITY: 0.66 g/mL
- CARR'S INDEX: 31 %
- HAUSNER RATIO: 1.45

How would you **like** your lactose?

The data contained in this document are for information purposes only and are non-contractual.  
For more information, contact us: [technical.support@armor-pharma.com](mailto:technical.support@armor-pharma.com)